

# DRAFT MASTER PLAN 2019

## WHAT TO LOOK OUT FOR IN SENGKANG!

Increasingly vibrant, the town of Sengkang will see even more amenities and lifestyle destinations in the next few years. Access to recreational and green spaces will be improved, and there are more options to work close to home at Sengkang West. For more information on the Draft Master Plan 2019, please visit [ura.sg/DMP19](http://ura.sg/DMP19).

## HOW OUR TOWNS ARE PLANNED

Our towns are planned to be liveable and self-sufficient, with easily accessible shops, health care, schools, community facilities and parks. Commercial nodes, industrial estates and business parks within or nearby the town, also help to provide nearer job opportunities for residents. The detailed planning and implementation of plans for each town is a joint effort of many government agencies.



Sengkang Riverside Park

## THE OVAL @ SELETAR AEROSPACE PARK

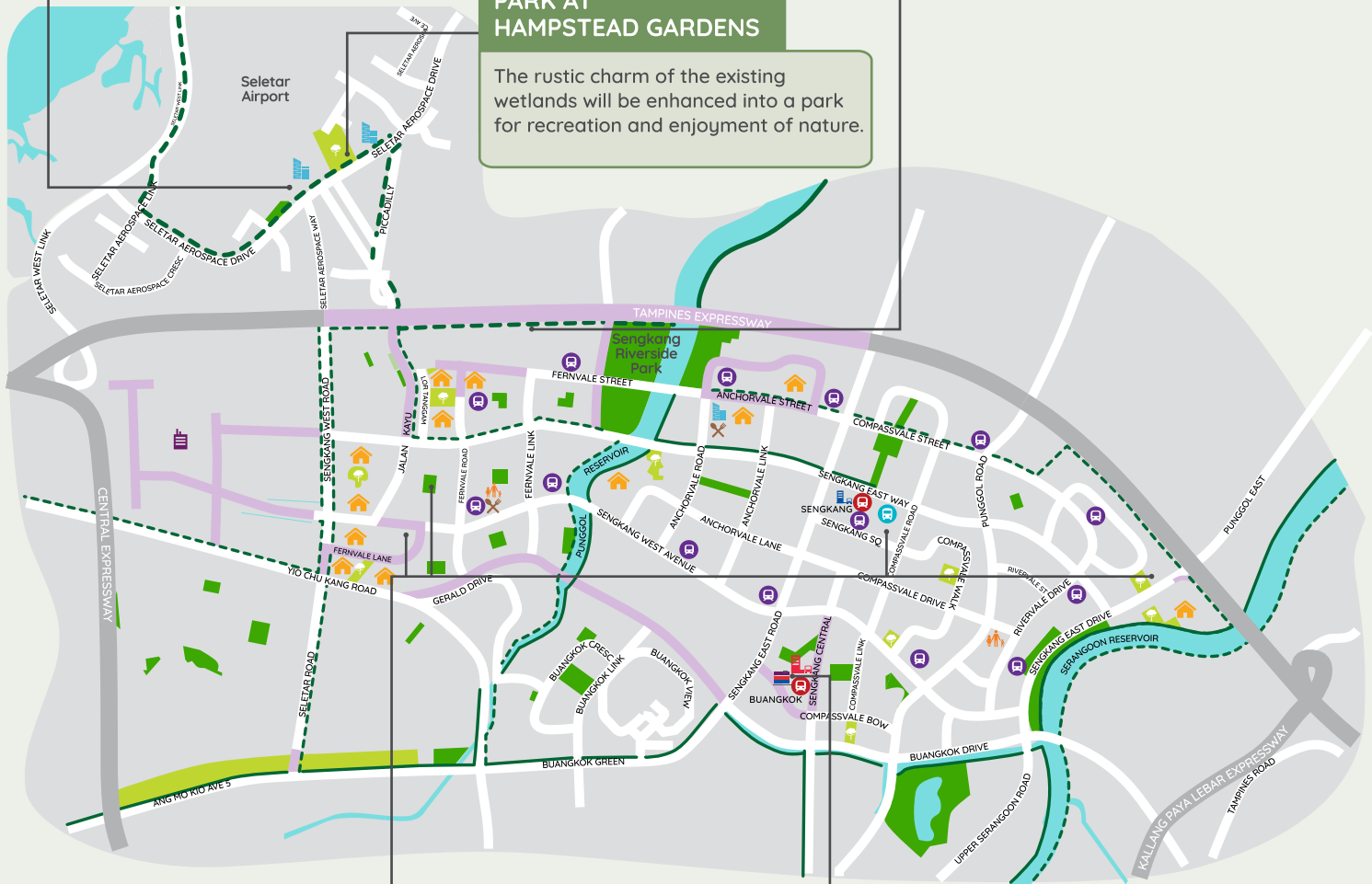
Visitors can look forward to new amenities at The Oval once the thirteen bungalows slated for refurbishment are completed in 2019.

## PARK AT HAMPSTEAD GARDENS

The rustic charm of the existing wetlands will be enhanced into a park for recreation and enjoyment of nature.

## ROUND ISLAND ROUTE

Connecting the town to the rest of the island, the Round Island Route offers greater accessibility to recreation and green spaces.

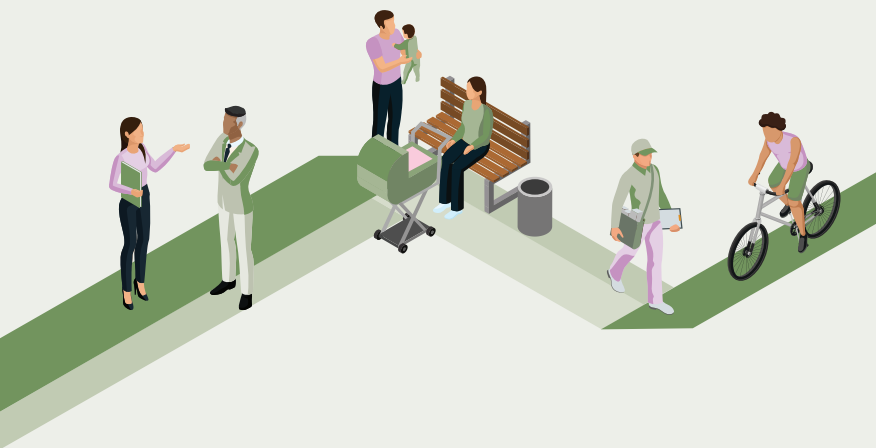


## NEW LARGE CHILDCARE CENTRES

Four large childcare centres will be built by 2019, offering spaces for around 2,000 children. These will be distributed across the town so that families with young children can have access to quality and affordable childcare services.

## BUANGKOK INTEGRATED DEVELOPMENT

A mixed-use development, integrating the Buangkok MRT Station, a bus interchange, community club, hawker centre and retail amenities, will open by 2025. Residents can also look forward to generous public spaces that open up opportunities for community and social events.



### LEGEND

#### EXISTING DEVELOPMENTS

- Park
- Interim Park
- MRT
- LRT
- Bus Interchange
- Waterbody
- Park Connector/Cycling Route
- Integrated Transport Hub

#### NEW DEVELOPMENTS

- Residential
- Industrial
- Hawker Centre
- Integrated Transport Hub
- Road Improvement (Upcoming/Under Study)
- Commercial
- Park
- Community Club
- Integrated Development
- Park Connector/Cycling Route